

Property
Special



*The Grade II listed
Mansion House
has been
transformed into
a seven-bedroom
family home*

POWER PLAYER

► Sitting right in the heart of the Establishment, just a scone's throw from the River Thames, the resplendent Mansion House has a rich political history. The property, which was designed by architect Horace Field, was built in 1905 and initially served as the London office of the North Eastern Railway Company. In 1982 the Liberal Democrats (then known as the Social Democratic Party) moved in – and they didn't pack up their filing cabinets until 2011. It was at this stage that London-based luxury developer Saigol DDC stepped in to transform the building into a seven-bedroom family home, while maintaining its historical charm.

The renovation, aided by craftsmen who had previously worked on Windsor Castle and the Palace of Westminster, incorporates a host of striking period features, such as a sweeping central staircase and ornate gilt cupola. Despite being Grade II listed, it is packed with modern amenities including an eight-person lift and a wellness area complete with a 10 metre swimming pool. "The sheer detail that has gone into the renovation and restoration of this property is exquisite," says Alastair Nicholson, partner at Knight Frank Mayfair.

"The work on some of the more intricate areas of the interior has been carried out by the most talented and sought-after artisans in the United Kingdom."

As well as its dramatic interiors, Mansion House, which is 15 metres wide, has an Italian garden and roof terrace, which offers views of Big Ben, the House of Lords and Westminster Abbey.

Info:

Mansion House, Cowley Street, Westminster, SW1P is for sale with Knight Frank with an asking price of £36 million, knightfrank.co.uk





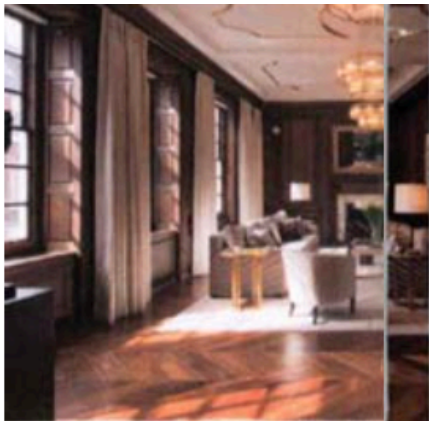
For more property
inspiration
[boatint.com/
property](http://boatint.com/property)

Originally a boat
house, the Georgian
property offers
envious views
of the annual
Boat Race

DOWN BY THE RIVER

► If you are a fan of boats with oars as well as those with sails, it's hard to think of a much more enticing proposition than the Beach House. Sitting just metres from the towering green pillars of Hammersmith Bridge, this Georgian property offers a prime viewing spot for the annual Boat Race (the bridge is often a crucial point in the duel between





The house boasts striking period features alongside modern amenities, such as a 10m pool

PHOTOGRAPHY: SIMON GROVES

Oxford and Cambridge universities).

As well as its viewing credentials, the Grade II listed double-fronted family house has six bedrooms and five bathrooms. It was originally a boat house situated right on the river's edge before the tow path was laid and the initial structure became part of the basement of the current house when it was built around 1760. It is still packed with period features, lovingly restored, including fruitwood banisters and mouldings.

"The sale of Beach House presents a rare opportunity for a future buyer to own one of the capital's most splendid riverside properties with well-proportioned family accommodation," says Christopher Bramwell, head of Savills west London.

At the rear of the property sit mature landscaped gardens with a hot tub. To the front of the house, across the walkway, is a private river pier, where you can moor a boat for direct access to the Thames.

Info:

Beach House,
Lower Mall, W6 9DJ
is for sale with
Savills with an asking
price of £9 million,
savills.com



LONDON DEVELOPMENTS TO INVEST IN NOW



BISHOPS ROW

Midway between Putney Bridge and Hammersmith Bridge, this row offers nine townhouses of four and five bedrooms. The roof terraces and balconies offer views of the Thames and the London Wetland Centre.

From £4.45 million, octagon.co.uk



THE BROADWAY

On the former site of New Scotland Yard in Westminster, the most spectacular homes will be a range of lateral and duplex penthouses, some with double height reception rooms for floor-to-ceiling vistas. *From £8.24 million, northacre.com*



WARDIAN LONDON

In South Dock, with unrivalled views over Canary Wharf and the City, this is a collection of luxury apartments. The two residential towers combine modern architecture with innovative landscaping.

POA, ecoworldballymore.com