



BRITISH

GENTLEMEN'S QUARTERLY
MAY · 2018 · £3.99

Alastair
Campbell
V
Michael
Wolff

Living with
war's worst
injury

By Jonathan Heaf

The return of
Westworld

Your new
manifesto of
masculinity

Could Jacob
Rees-Mogg
get any
worse?

DUA LIPA

One billion people
can't be wrong

Interview by Stuart McGurk

Photographed by Mariano Vivanco

These are the clothes you're looking for

Giorgio Armani dresses the new Han Solo

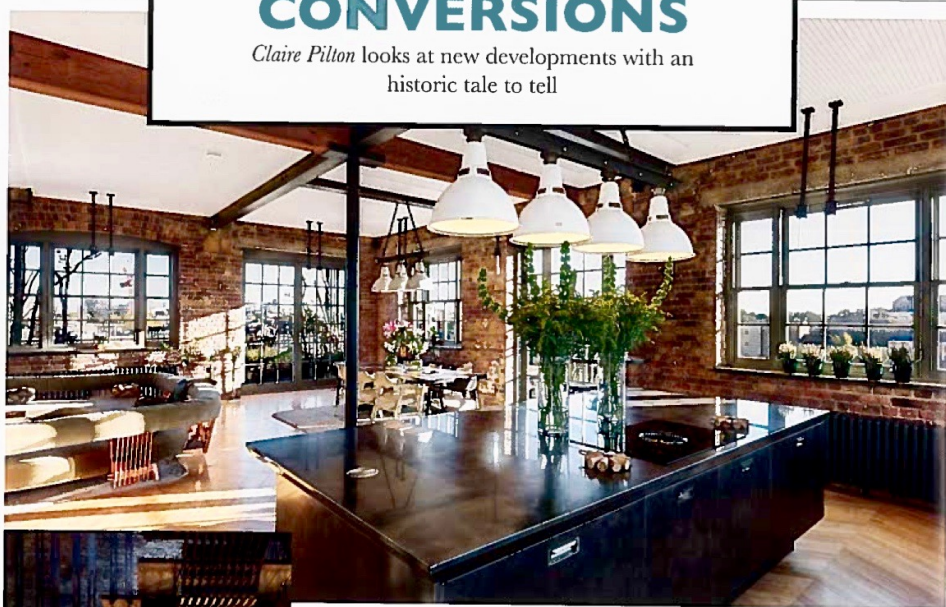


5 days ago

CONDÉ NAST
BRITAIN | PROPERTY

CAPITAL CONVERSIONS

Claire Pillon looks at new developments with an historic tale to tell



CHAPPELL LOFTS

With Beethovens and Strauss among its clients, the former Chappell Piano Factory on Baldmoor Street, Camden, has been converted into nine massive, £2.25 million-plus, loft-style apartments. Dramatic interior architecture is teamed with fabulous facilities including a pool, gym and club lounge with a cinema screen, cocktail bar and DJ booth. Sing songs around the old joists take on a new meaning.

View Chase: 020 7751 1731
Search: 020 3120 2900

Globally recognised and Grade II* listed, Battersea Power Station is the most iconic industrial building in Britain to assume residential status. The Power Station, which is central to a new 42-acre, 4,000-home neighbourhood, will house 253 apartments; with over 90% purchased off plan six years prior to the building's completion in 2020, prices now start from £2.75 million. Residents will move in as the rest of the Power Station opens up to a huge choice of shops, restaurants, cafes, a 2,000-seater events space and Apple's new UK campus.

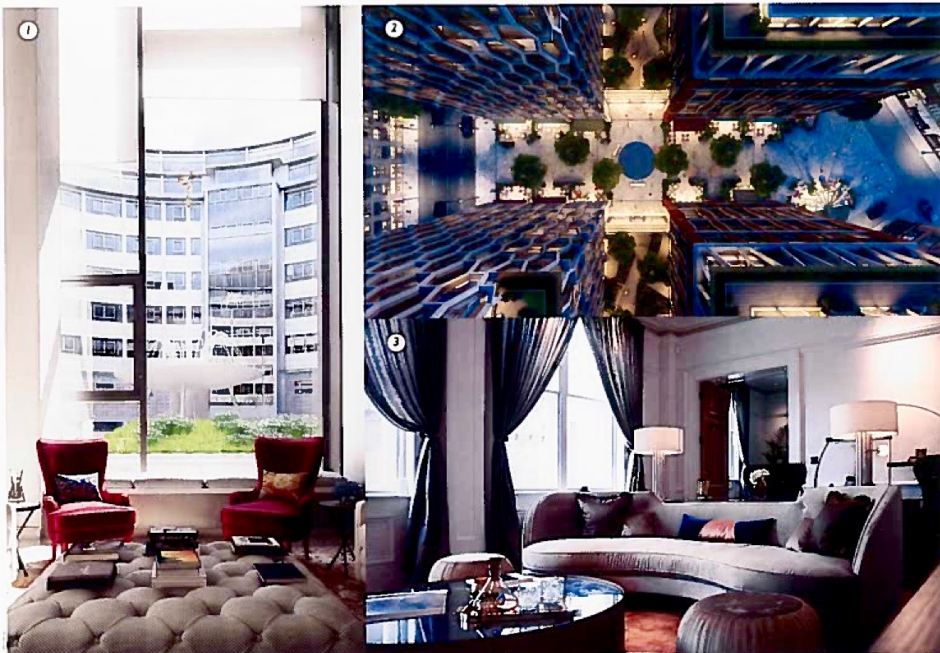
Upstream at Chelsea Waterfront, Lots Road Power Station will also house a mix of flats, retail and restaurants. Prior to its anticipated 2020 launch, the first of this 11.3-acre development's two towers, designed by Sir Terry Farrell and rising 37 storeys, will launch later this month.

Continue upstream past the Hurlingham Club, and on Stevenage Road, SW6, alongside the bank of the Thames, a former industrial site turned medical centre is now home to a classy

new Octagon development. Enjoying access to the river footpath between Putney and Hammersmith Bridges, and a stroll from The River Cafe, Bishops Row is a terrace of nine grandly proportioned £4.995 million-plus townhouses.

If arty loft conversions are more to your taste, super-cool Camden has two notable new schemes; Chappell Lofts (above) and Arlington Lofts. The latter 'heritage conversion' by Fabrica has transformed the Thirties electricity substation on Arlington Road, NW1, into 16 loft-style apartments, each with a terrace, priced from £699,950. A show flat by Honky demonstrates the scheme's high ceilinged, warehouse feel.

Marylebone's Michelin-starred eateries, art galleries and boutiques bear witness to its relatively recent rise to residential stardom. Here, insurance tycoon Peter Wood is waving his property firm W-One International's wand at BBC Radio's former London HQ. Behind its Thirties façade, The W1 London will offer 19 apartments from £4.1 million, together with five four-bedroom townhouses from £11.5 million.



1. TELEVISION CENTRE

Spring from the former BBC HQ in White City celebrating its grand opening as residents move in and Soho House, Electric Cinema and Bluebird Cafe open their doors. Twenty-two new 'premium' apartments start from £3 million; they include a penthouse designed by Bella Freud that looks beyond the Heaviside statue to the London skyline.

020 8811 8720

2. BROADWAY

Purchased for £370 million in 2014, Westminster's 'late' New Scotland Yard has disappeared to make way for a six-tower scheme of 768 apartments; due for completion Q4 2021, they start from £1.56 million. The 14- to 19-storey towers will put Buckingham Palace, Westminster Abbey and the House of Parliament within residents' gaze.

020 7319 8000

3. OCEANIC HOUSE

A wave away from Nelson's Column, the White Star Line's HQ has been transformed into a £100 million liner-themed foyer. The grandest entrance foyer, once a booking office for Titanic's first-class passengers, sets the scene for six lateral apartments and a £20 million duplex penthouse.

Beauchamp Estates: 020 7499 7722 and Strutt & Parker: 020 7316 1677

4. ANCASTER GATE

Designed by Robert Adam in 1773 as a weekend retreat for the 3rd Duke of Ancaster, this Grade II-listed Georgian mansion has now been restored and divided into three handsome homes; with four to six bedrooms and £4.45 million to £7.25 million price tags, they have unvalued views over the 2,500-sq-ft 'back garden' of Richmond Park.

London Square: 0333 696 4111

5. GASHOLDERS

At King's Cross, prices start from £810,000 for the only apartments in the world to be built within a conjoined triplet of Victorian Grade II gasholder frames. Central atriums, reminiscent of New York's Guggenheim Museum, bring light to the structures' core, while an interactive installation by Tobias Rehberger illuminates the entrance lobby.

0333 077 0200